

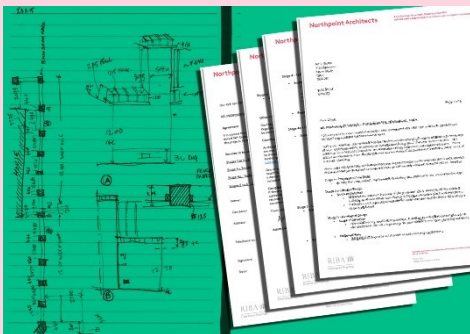
Northpoint Architects

RIBA Plan of Work Services Summary Stages 0-3



0 – Strategic Definition

We always love to receive new enquiries. At this stage we will work with you to identify the project requirements, estimated budget and confirm our scope of services and proposed fees.



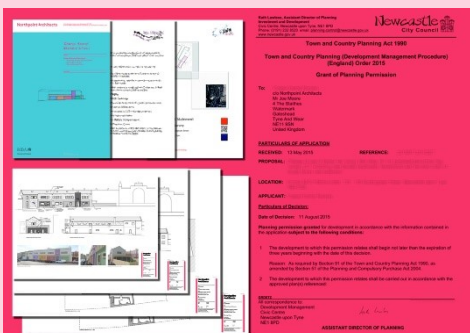
1 – Preparation and Brief

The project brief will be discussed and developed in more detail, feasibility ideas prepared and a measured survey undertaken as required.



2 – Concept Design

We will discuss design ideas and options for your approval and prepare outline proposals including 3D visualisations. A Pre-Application Planning Enquiry can be submitted if appropriate.

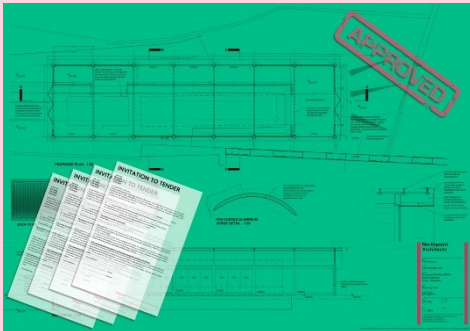


3 – Developed Design

We will prepare and submit a Full or Outline Planning Application (or advise if permitted development). We will take care of the whole process including advising on the appointment of any additional consultants as required.

Northpoint Architects

RIBA Plan of Work Services Summary Stages 4-7



4 – Technical Design

Depending on the agreed procurement route, at this stage we would normally submit a Building Regulations Application, co-ordinate detailed designs with other consultants and manage the process of obtaining / analysing costs and appointing a contractor via a competitive tender process.



5 – Construction

We will advise on and administer the construction contract, undertake site inspections and respond to queries to ensure that the initial project ideas and aspirations are translated into a successful built solution.



6 – Handover and Close Out

The ultimate goal is to provide you with a high quality end product which fulfils and exceeds your requirements. This stage involves issuing the final certificates and concluding the Contract Administration.

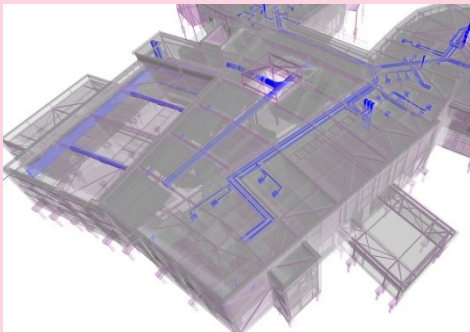


7 – In Use

It's great to keep in touch, evaluate projects and see the spaces we have designed being enjoyed. Many of our projects come from repeat instructions or client recommendations.

Northpoint Architects

RIBA Plan of Work Services Summary CDM 2015 and BIM



CDM 2015

Throughout the RIBA Plan of Work Stages we will offer guidance on the Construction (Design and Management) Regulations 2015, providing you with sufficient information to ensure your duties are fulfilled as well as offering the service of Principal Designer.

For more information see:

<http://www.hse.gov.uk/construction/cdm/2015/index.htm>

BIM

If you haven't come across BIM before it stands for **Building Information Modelling**.

BIM allows us to create a central database from which we draw all information associated with a given project. All data (including models and drawings) is interconnected ensuring designs are fully co-ordinated. In practice this flags up issues that under more traditional methods could remain until construction stage. This saves our clients time and money during the construction phase.

This also means that we can improve our project delivery in the following ways:

- A holistic approach to building services, structure and architecture.
- Reducing programme risk.
- Improving health and safety design.
- Semi-automating material take offs.
- Using 3D design data to explain problems and illustrate ideas.

For more information or advice on any of the above we would be delighted to hear from you.

0191 493 4890

Northpoint Architects
4 The Staithes
Watermark
Gateshead
NE11 9SN

northpoint-architects.com

info@northpoint-architects.com

[@NorthpointArch](https://www.instagram.com/NorthpointArch)